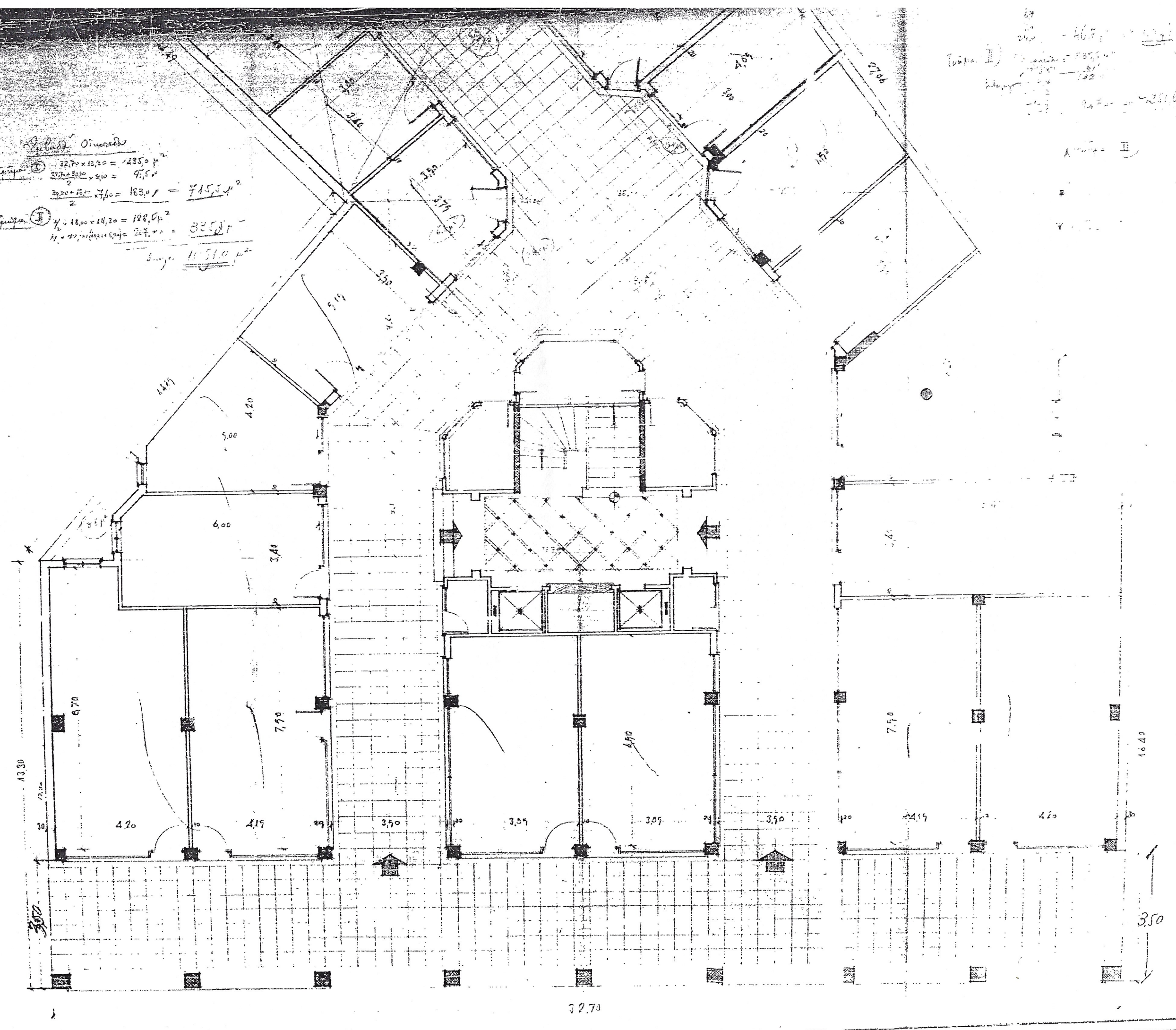


1. $32,70 \times 12,20 = 405,0 \text{ m}^2$
 $\frac{2070 \times 5020}{2} = 97,5$
 $\frac{3920 \times 1620}{2} \times 7,60 = 183,0 \text{ m}^2 = 715,5 \text{ m}^2$
 2. $\frac{1}{2} \times 18,00 \times 14,20 = 128,6 \text{ m}^2$
 $\frac{1}{2} \times 22,00 \times 10,00 = 110,0 \text{ m}^2 = 238,6 \text{ m}^2$
 Summa 11.510 m²

1. $32,70 \times 12,20 = 405,0 \text{ m}^2$
 2. $\frac{1}{2} \times 18,00 \times 14,20 = 128,6 \text{ m}^2$
 3. $\frac{1}{2} \times 22,00 \times 10,00 = 110,0 \text{ m}^2$
 4. $\frac{3920 \times 1620}{2} \times 7,60 = 183,0 \text{ m}^2$
 5. $\frac{2070 \times 5020}{2} = 97,5$
 Summa 11.510 m²



32.70